



Within 6 months of its construction, bearing bolts on a bridge in the New Territories of Hong Kong were showing signs of corrosion. The original cast steel and galvanized bolted sections were failing, partly because of damage to the bolts during installation, and replacement stainless steel bolted areas were suffering from galvanic corrosion problems.

Enviropeel was chosen to provide a solution because of its proven ability to stop corrosion in bolted systems. E170 was the chosen material, because its high inhibitor content was ideal for such a situation.

Trained and supervised by an Enviropeel engineer, the work was carried out by technicians from the commissioning company, applying protective coatings to thousands of individual bolts, an operation requiring more than a thousand movements of the Enviropeel machine with applications over 40 metres above ground level.



BRIDGE BEARING BOLTS HONG KONG **ENVIROPEEL** THERMOPLASTIC SYSTEMS CASE STUDY

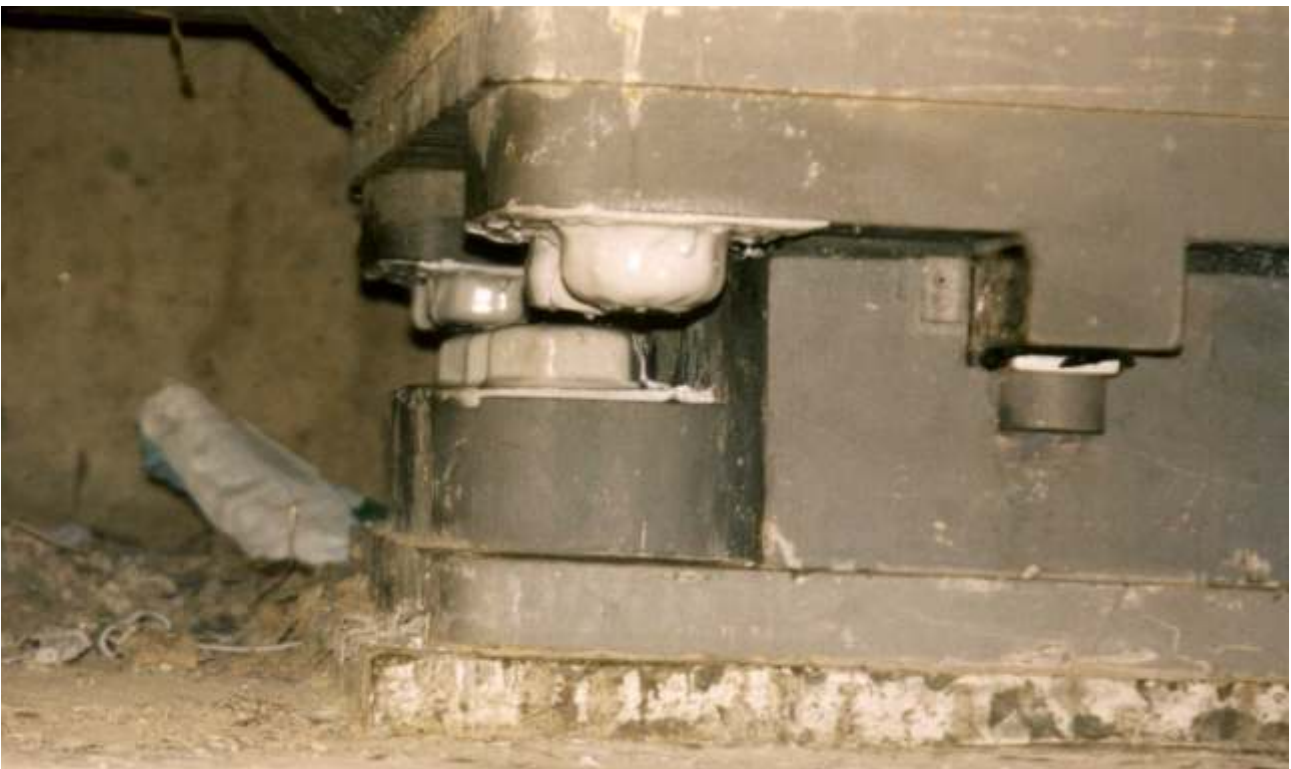


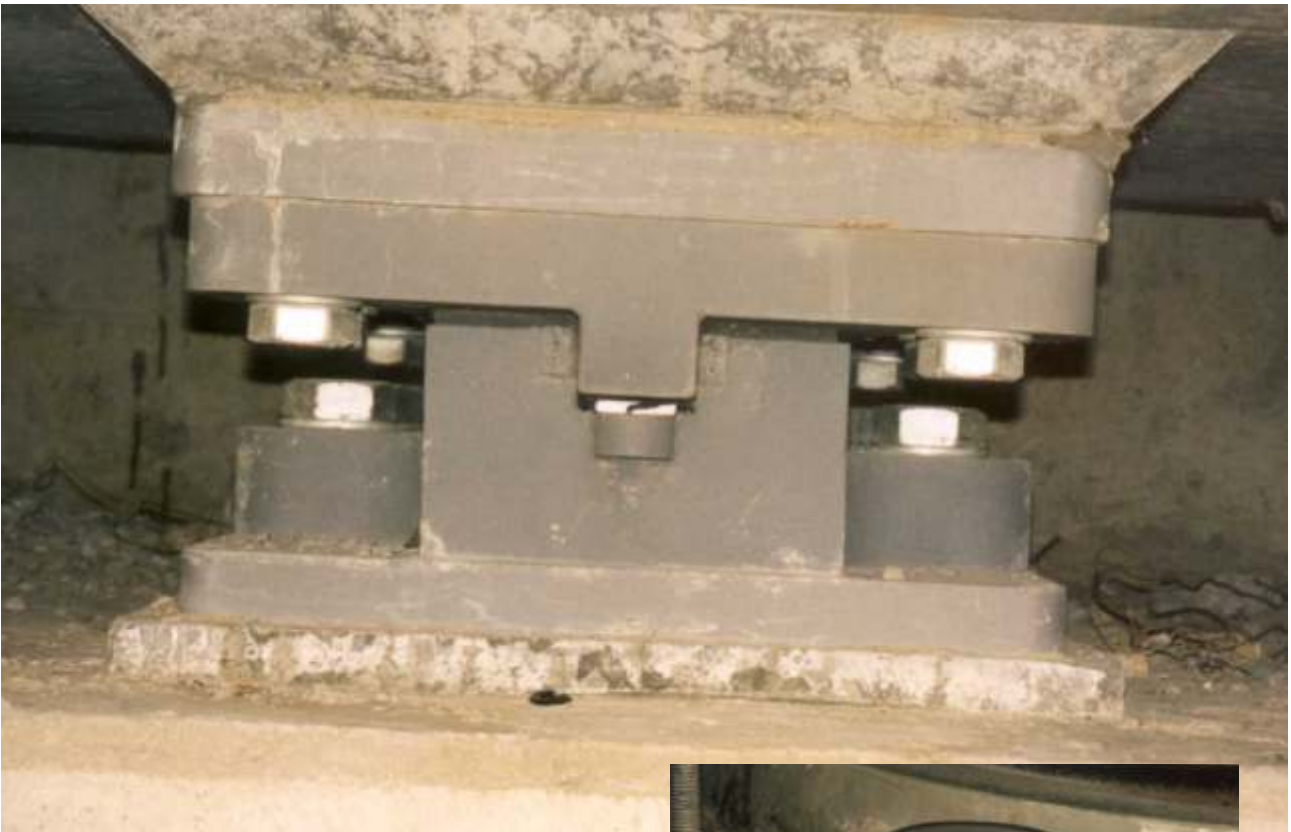


Pictured above left: Streaming corrosion from rusting bolts after only six months.

Above right: Extreme access problems meant that precasting bolt caps on site from Enviropeel and then fixing them in place with molten material was often the most appropriate technique.

Below: This typically restricted area shows how the Enviropeel material was applied.





These pictures show an untreated section above and a protected section below, once more showing how difficult access was, especially to the rear of the bolted areas.

To the right is a close up view of the applied material. Protected within the Enviropel cocoon, the bolt head is bathed in inhibitors, preventing any further corrosion.





Despite the massive number of applications and machine movements, the Enviropeel system proved equal to the task. Although only using the standard hose, its 10 metre reach allowed applications to take place a considerable distance from the machine, as these pictures show.

Equally apparent from these photographs is how restricted some areas were and the site's logistical complexity. The key to the success of the project was the flexible approach allowed by the Enviropeel System, with techniques evolved to address issues that were specific to the project, avoiding delays and cost overruns.

ENVIROPEEL
THERMOPLASTIC SYSTEMS
www.enviropeel.com

For more information please contact:
ENVIROPEEL SYSTEMS (UK) LIMITED
3 Charles Wood Road, Dereham
Norfolk, NR19 1SX, United Kingdom
Telephone: +44 (0)1362 694915
Facsimile: +44 (0)1362 695350
Email: hq@enviropeel.com